

# A complete range of supporting services for delivery, installation and commissioning



CABINS AND MODULAR BUILDINGS REFURBISHED, RENOVATED AND RECYCLED



The installation process involves the transportation and siting of the individual modules onto a concrete pads set into a pre-prepared and levelled area. Where required a mobile crane will be used. For smaller installations an integral lorry mounted crane can be used.



The individual modules have been pre-assembled and furnished in the factory so that a minimum of work is required on-site.

As additional modules are added, they are connected and levelled to the previous module, and the roof and floor connections capped and waterproofed. Thus the installation is minimally exposed to inclement weather conditions during delivery and siting.

With the modules installed the main services and the building weather sealed.

Once sealed, the installation of the internal services for power, lighting completed and increasingly the IT services installed and commissioned.



## Double Storey Modular Buildings for Education & Commercial Applications



[www.cabinsgb.co.uk](http://www.cabinsgb.co.uk)

Sales & Refurbishment Centre  
Building 3031  
Alconbury Weald Campus  
Alconbury, Huntingdon  
Cambs PE28 4WX  
Tel: 01480 861166



[www.teambuildingsystems.co.uk](http://www.teambuildingsystems.co.uk)

# Recycled Modular Classrooms fitted out to your requirements and budget

Recycling is a process through which the underlying structure of an existing modular building can be transformed to meet the most stringent requirements for environmental standards and operational requirements for any educational establishment.

Combining as they do the essential flexibility of modern modular structures with their inherent transportability it allows both short and long term requirements to be met with no drop in standards or utility.

This two storey building provided approximately 800m<sup>2</sup> of classroom accommodation, in a variety of configurations, fitted out to cater specifically for a number of specialist subjects in addition to the more standard classrooms during a major rebuilding programme.



Food Technology



Classroom



IT Services



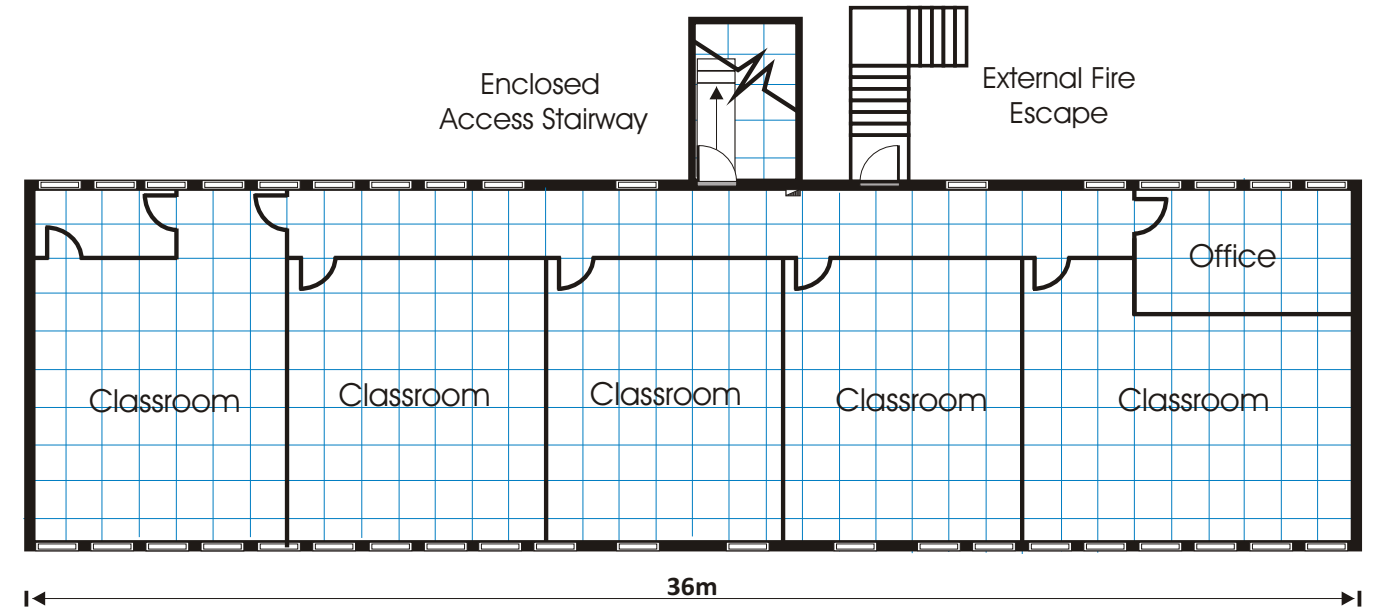
Textiles



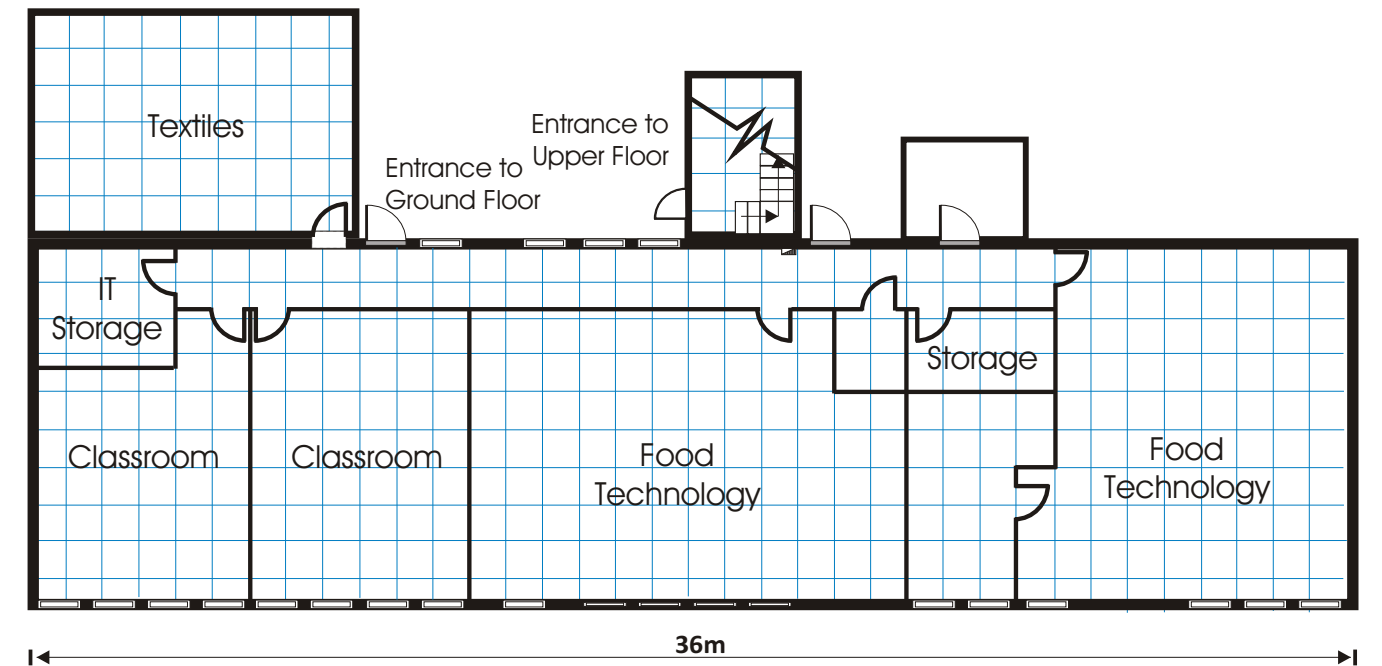
Admin Office



Teacher's Workstation



Upper Floor



Ground Floor

